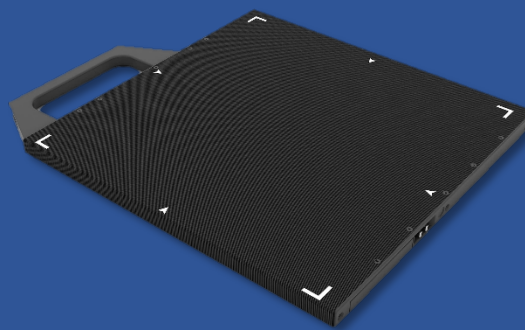


AspenFPD-1212

Wireless Flat-Panel X-ray Detector

Features

- Fast image acquisition time
- Light and Slim design
- Inner storage: Up to 200 images can be saved in the detector
- Web Viewer: Direct image review from any mobile devices
- Long Battery life time



AspenFPD-1212w

Specification	AspenFPD-1212 Wireless	AspenFPD-1212 Wired
Application	General Radiography	
Sensor	a-Si TFT array Flat Panel Detector	
Conversion Screen	GOS	
Active Area	12 x 12 inch / 287 mm x 287 mm	
Sensor Pixel	2,048 x 2,048 (4.1M pixels)	
Pixel Pitch	140 µm	
Image Data	16 bit	
Trigger Mode	AED (Automatic Exposure Detection), Manual Trigger	
Calibration Mode	ACC (Auto Calibration Control), Manual Calibration	
Data Transfer Time	Less than 1 sec.	
Capture Cycle Time	3-5 sec. (Approx.)	
Wired Interface (Data Output)	IEEE 802.11ac	Gigabit Ethernet
Voltage	AC 100-240V, 50/60Hz DC 22-24V, 5A	
Display	OLED 128 x 32	
Dead Space	5.8 mm	
Dimensions (W x L x T)	308.5 mm x 319.5 mm (Cassette-size for the standard table or wall bucky)	
Weight	1.9 kg / 4 lb (Including Battery)	1.5 kg / 3 lb (without Battery)
Battery Type	Lithium Ion Polymer Battery	HDMI Type Data Link Cable

