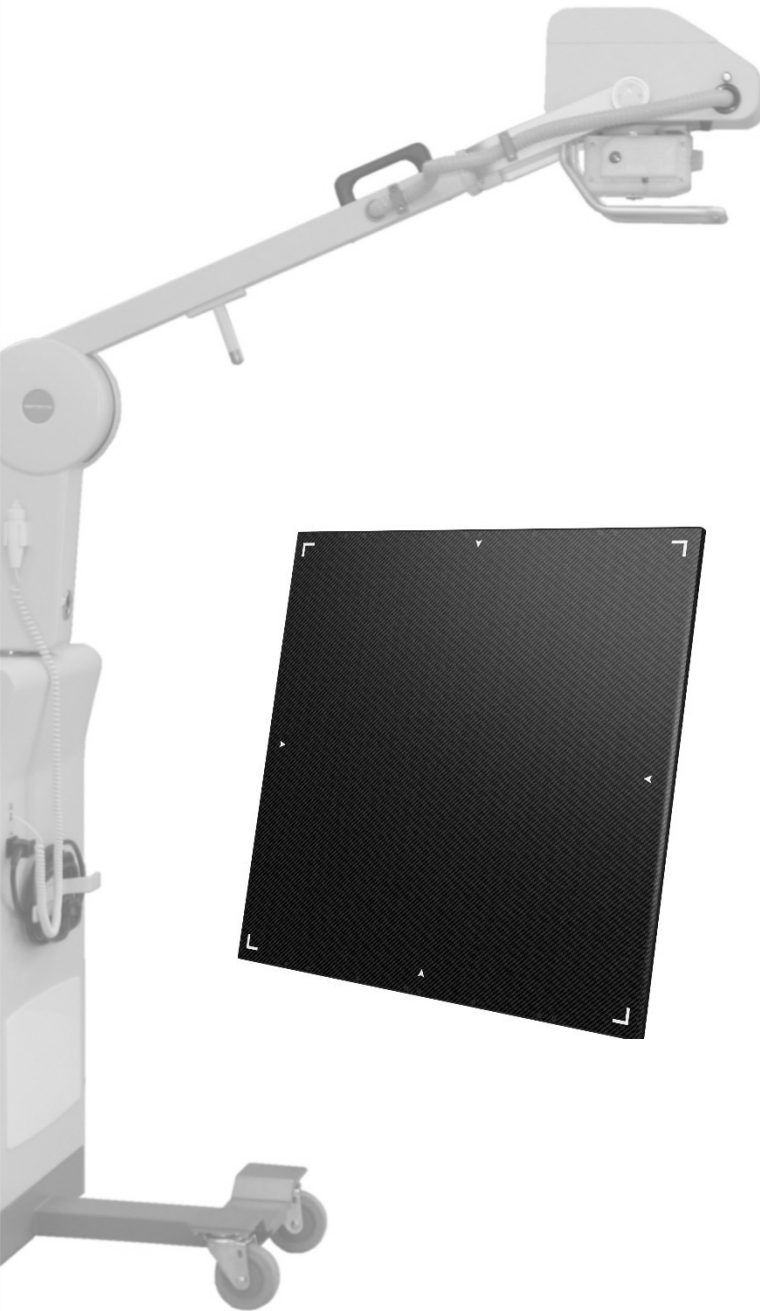


aspensate

AspenFPD-1717

Cassette Type
Wired/Wireless Detector



Smart Exposure Detection (SED)

SED advances auto exposure detection by reducing error rate and enabling larger area detection to improve efficiency and stability for radiology professionals.

HQ.

High Image Quality

A-Si based TFT technology with low noise enhances image quality with constant & reliable image acquisition.



Slim design & Light weight

advanced technology provides slim, light & compact design which enhances convenience for radiology professionals.



Portability and Durability

Up to 100 stored images in the detector
Long-life battery and quick recharge.

AspenFPD-1717 Specification



Images



AspenVue Software



Components

** handle is removable

AspenFPD-1717 (8 items)

Package Weight: 9.5kg/21lb
 Flat Panel X-ray Detector
 Control Box
 Power Adaptor & Cord
 Ethernet Cable (10M/394in)
 X-ray Sync Cable (10M/394in)
 Extended Cable (4.5M/177in)
 S/W CD & User Manual

AspenFPD-1717		
Item	Unit	1717 Wired
Sensor Type	-	a-si TFT
X-ray Converter (Scintillator)	-	Gadox (Gd2O2S), CsI:TI
Dimension (W x L x H)	mm / in	460 x 461 x15 / 18 x 18 x 0.6
Weight	Kg / lb	2.6 / 5.7
Pixel Pitch	µm	140
Active Pixel Area	mm / in	430 x 430 / 17 x 17
Active Pixel Resolution	pixels	3072 x 3072
Limited Resolution	Lp / mm	3.9
AD Converter	bits	16
Data Transfer Interface	-	Gigabit Ethernet
X-ray Generator Interface	-	Line Trigger Auto Exposure Detection
Preview Time**	sec	3-5
Battery Type	kVp	HDMI Type Data Link Cable
Material	-	Carbon
Power Consumption	W	AC 100-240V, 50/60 Hz DC 22-24V, 5A

** Before Image Post-processing

aspenstate

www.aspenstate.com

Head Office

801 North Jupiter Rd. Ste. 200, Plano, TX 75074, USA

Tel. +1-214-257-0113 Fax +1-214-257-0116

E-mail: aspens@aspenstate.com

